

Land at former John Nightingale School site, Hurst Road, West Molesey, Surrey KT8 1QS

Erection of new single, one and a half and two storey Hurst Park Primary School (420 places) and nursery (30 places) together with provision of 26 parking spaces, and cycle and scooter parking; access off Hurst Road; laying out of outdoor learning and play areas and sports pitches; landscape planting and ecological habitats.

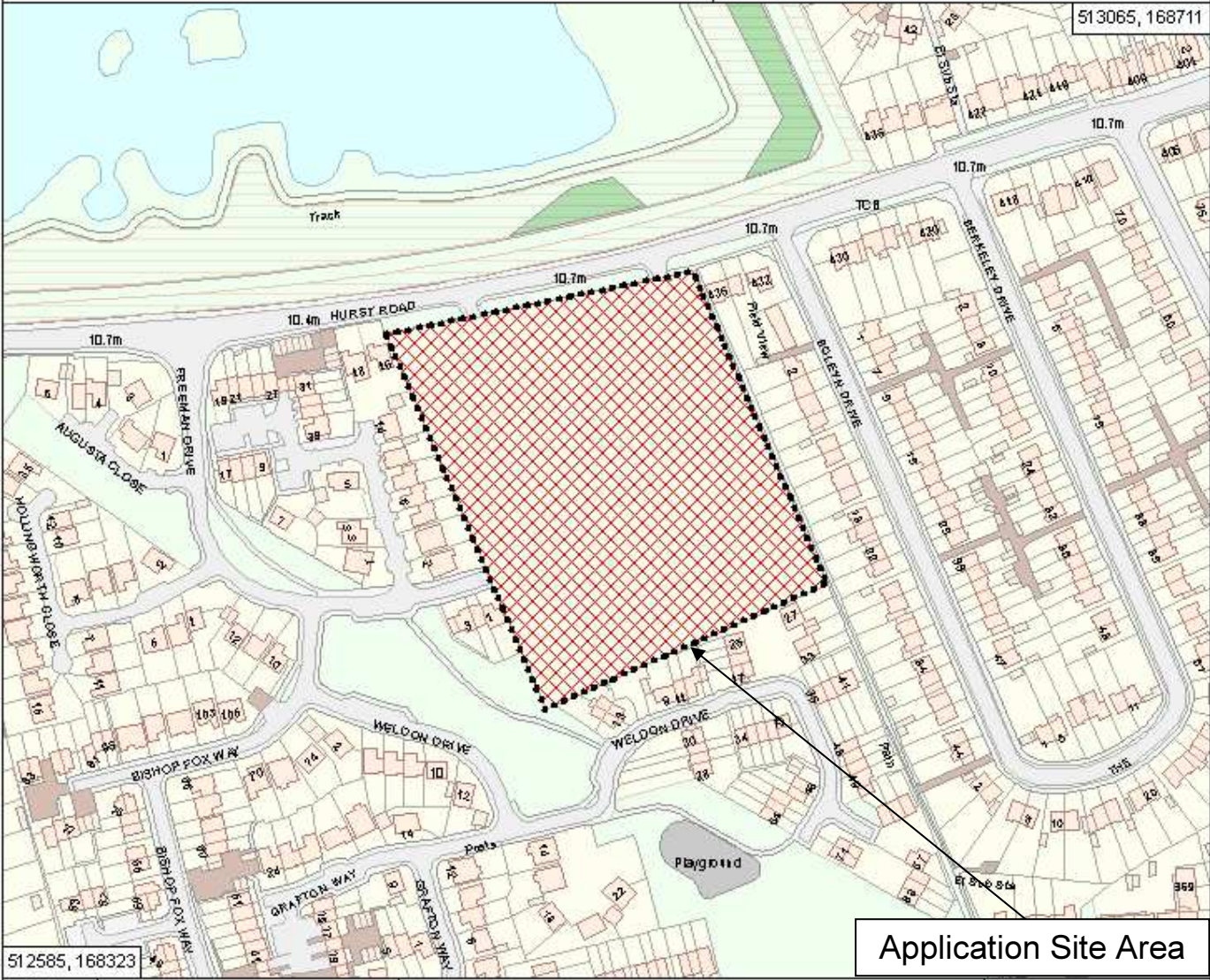
Application No(s): EL2014/0363

Electoral Division(s): West Molesey

Scale 1:10,000

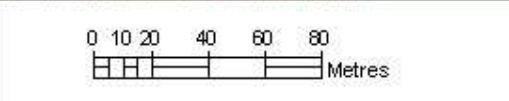
© Crown copyright. All rights reserved Surrey County Council, 100019613, 2013

This plan is for indicative purposes only



RefNo: SCC Ref 20130221

Date printed: 24/03/2014



Scale 1:2,500

512585, 168323

513065, 168711

Application Site Area

This page is intentionally left blank